



**We live in an economy where we privatize gains, socialize losses and underprice risk.**

— Thomas L Friedman

# THRIVE PLATFORM - THE HOLISTIC REGENERATIVE INNOVATIVE VALUE ENTITY

## WHY

Enterprises transitioning towards strong sustainability require ways to **assess their performance**, in context, relative to past performance, industry peers, within their community, and region The service is “the holy grail” of **business strategy**, linking sustainable performance to organizational business model acting on a finite planet.

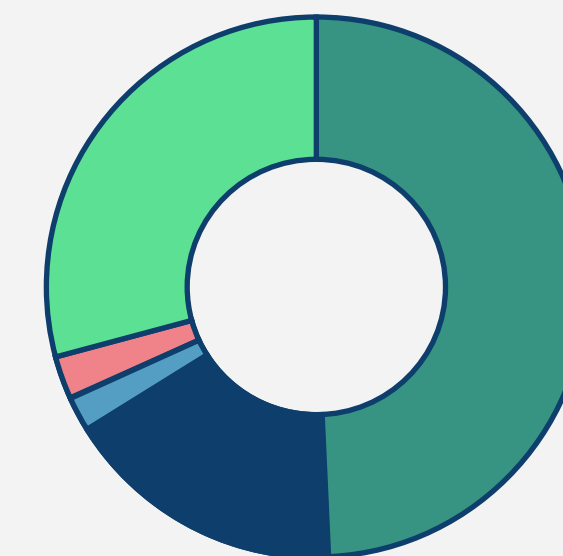
## HOW

The online web based, multi capital, values based, and science based tool, uses public integrated sustainability reporting data for material topic identification A modular, user customizable, agnostic formula engine, **aggregates impact measures** based on global thresholds and allocations into a **composite sustainability performance score**.

## WHAT

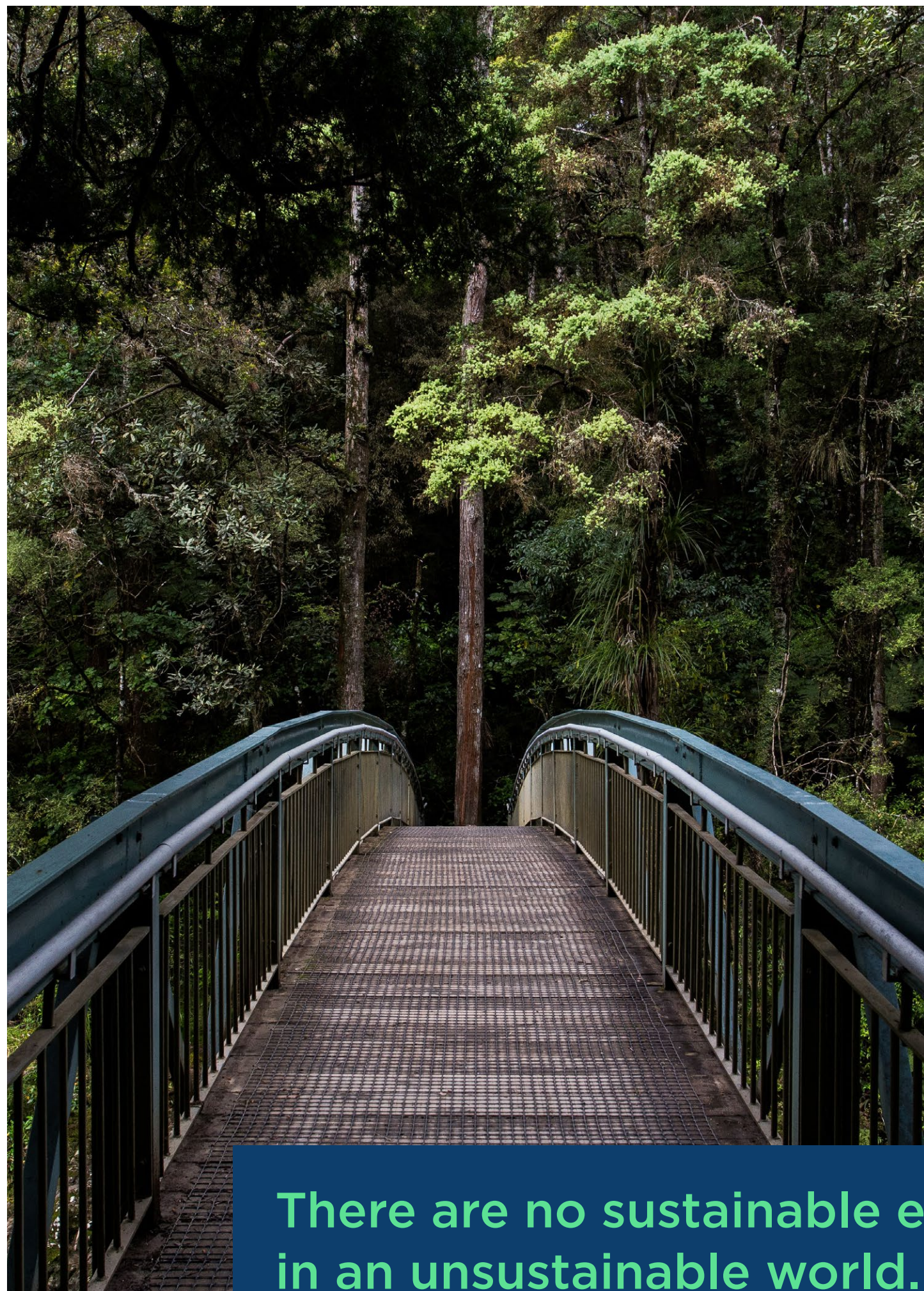
Based on seven years of trans-disciplinary research and design, the system gauges enterprise success through **scale-linking** at each level of impact. The system helps address wicked problems in transitioning to the circular economy by **implementing back-casting targets** whilst formulating their regenerative trajectory towards thrivable transformations.

## USE CASES



- 49% Consumers
- 29% Researchers
- 17% Consultants
- 3% Government
- 2% Corporate

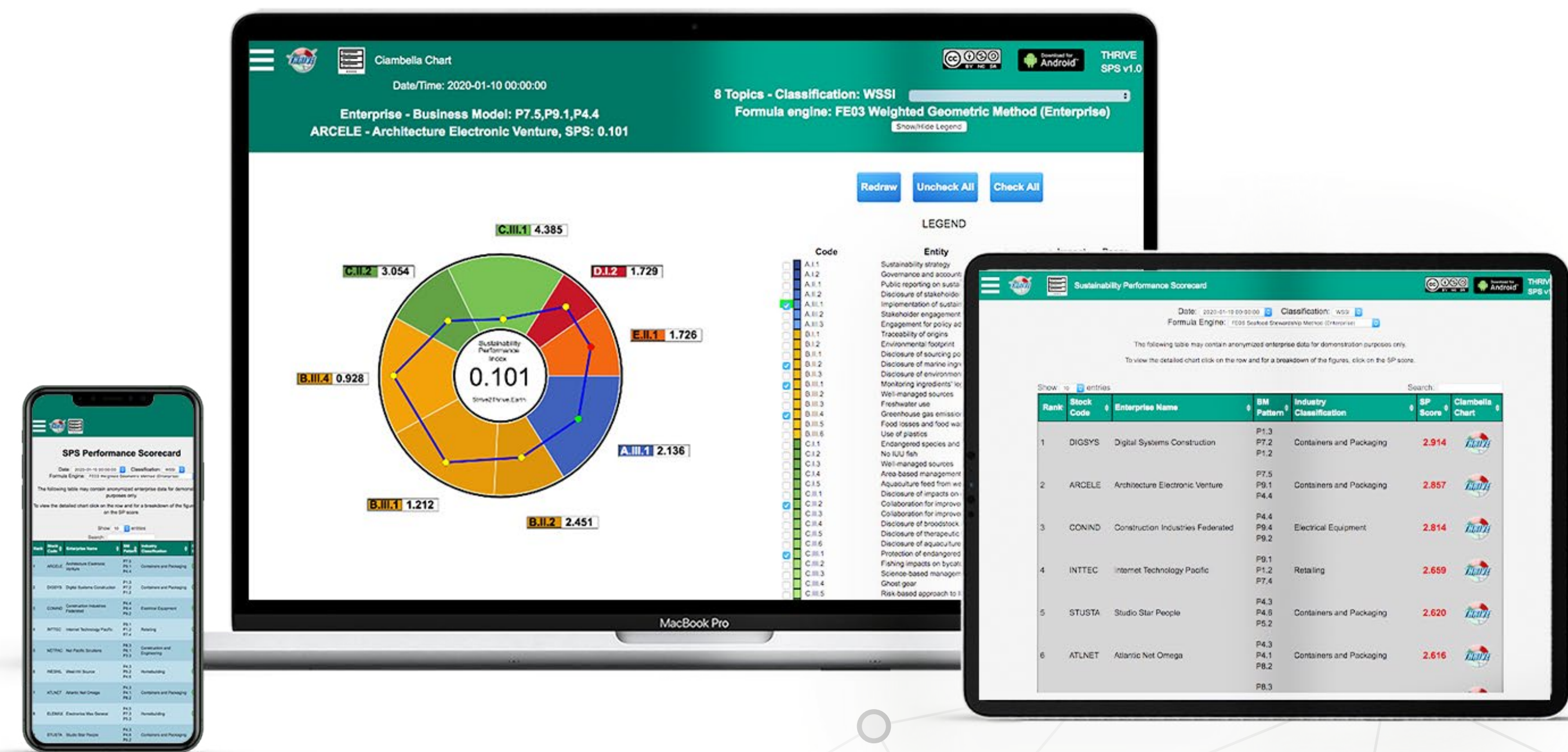




There are no sustainable entities  
in an unsustainable world.  
— Morris D Fedeli

# THE PLATFORM

THRIVE Platform utilizes impact charts for instant visualization of performance, thresholds and allocations. Charts can showcase historical performance whilst providing guidance with backcast targets. These are informed by what the best available science demonstrates is necessary and sufficient to achieve long term prosperity.





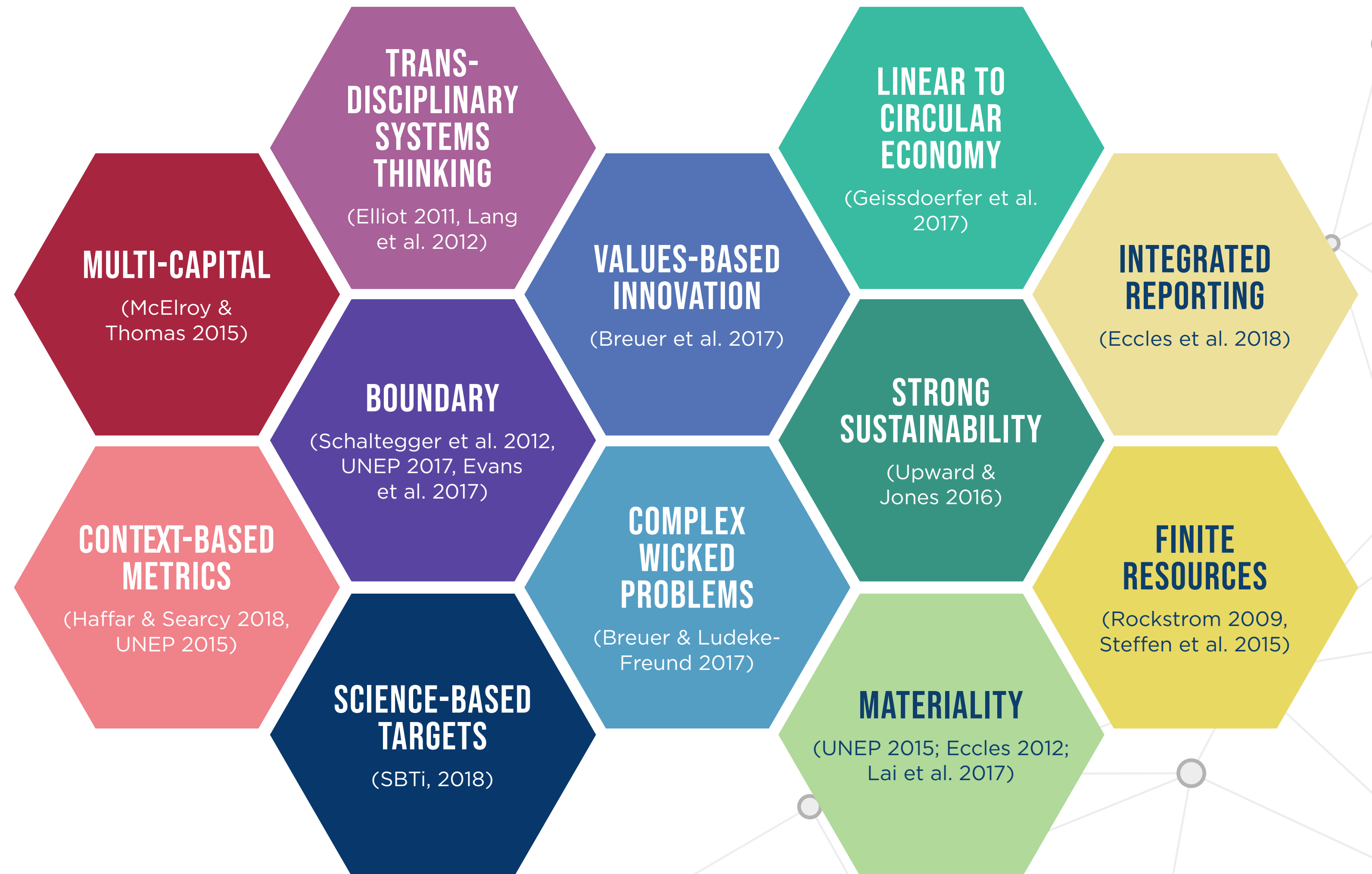
# FOUNDATIONAL FOCUS FACTORS

The 12 Foundational Focus Factors are the culmination of comprehensive research over a period of several years into the necessary and sufficient conditions required to transition humanity towards sustainability and indeed **thrivability**.

Utilizing a **systems thinking** approach, THRIVE Platform through a process of **systemic orchestration** guides entities towards thrivability. As a predictive tool it supports backcasting by taking a radical approach to entity **model innovation** across scale-linked levels.

Source: Assessing Corporate Sustainability Performance of Business Models. How business model innovation drives a successful sustainable business strategy? Fedeli (2018).

Presented at the 3rd New Business Model Conference in Sofia, Bulgaria in (2018).



# ASSAILING THE SEVEN C'S – CREATURE, COMPANY, COMMUNITY, CITY, COUNTRY, CONTINENT, AND COSMOS

THRIVE is an open public platform providing instant top-level visual comparison between the sustainability performance of entities at stratified levels of granularity such as city or country-wide. Comparisons may be within a sector or community or longitudinally across years with each level **scale-linked** to the next. Invoking the precautionary principle, taking a **strong sustainability stance**, and based on the framework for strategic sustainable development (FSSD), the platform invites non-substitution of natural capital resources with man-made ones.

Whether discovering an entity's commitment to gender equality, renewable energy, becoming carbon neutral or fighting the climate crisis, visualizations are unique as they provide instant comparison at a glance as to where an entity is succeeding or failing in its mission towards sustainability.

This first-principled approach, incorporates **backcasting targets**, placing entities on the trajectory towards thivability with the sustainability performance index providing a **context-based assessment** of its' impact. THRIVE Platform's intuitive visualizations represent the utility of resources together with **global thresholds and allocations** with entity impacts shown by material topic based on well-established standards such as SDGs. By re-integrating rather than reinventing, the THRIVE Platform indicates resource allocation, inner and outer thresholds, impact and a sustainability performance indicator for each relevant material topic as well as an overall **sustainability performance score**.

THRIVE platform integrates the 7Cs, by measuring performance adopting a scale-linked, values-based, context-based, and science-based approach informed by the natural sciences.

Furthermore, the **dashboard** incorporates dials and levers allowing one to **manipulate weights** and produce and capture customized charts to suit their needs for insertion in reports, presentations and other publications. A variety of charting and mapping options provide an easy to use, instant visual aid, displaying normalized sustainability performance measures in conjunction with selectable and scalable colour coded material topics and strategy.

THRIVE Platform **measures what matters most**, by empowering society and provoking entities to flourish and providing guidance towards thivability.

